

Wellington Exempted Village Schools 2022/2023 IDEA, Part B

What is the Individuals with Disabilities Education Act (IDEA)?

IDEA ensures that students with disabilities are provided with Free Appropriate Public Education that is tailored to their individual needs. The purpose of this legislation is to provide children with disabilities the same opportunity for education as those students who do not have a disability.

What is Part B of IDEA?

IDEA governs how states and public agencies provide early intervention, special education and related services. Children and youth (ages 3-21) receive special education and related services under IDEA Part B.

2022/2023 Part B Funding

\$247,693.61



What can special education funds be used for?

- Excess Costs
- SPED Teachers
- Related Service Providers
- Materials for Students with Disabilities
- Supplies for Students with Disabilities

For more information, contact:

Wellington Exempted Village Schools
Director of Student Services
Nancy Nimmo
440-647-7907
nnimmo@wellingtonvillageschools.org

WELLINGTON

EXEMPTED VILLAGE SCHOOLS

2022/2023 Part B Spending

Teacher Salaries

\$197,598.66

Salaries
\$155,012.43

Benefits
\$42,586.23

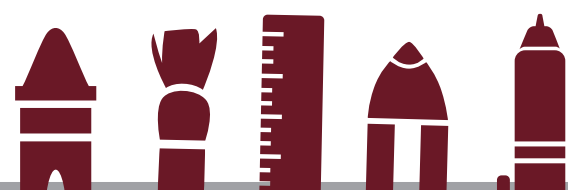


Additional Services and Supplies

\$50,094.95

Support Services
\$34,180.12
Benefits
\$5,545.35

Supplies \$10,369.33
(Including talkers, sensory items, earbuds, iPads, etc.)



2022/2023 Additional Spending

+Maintenance of Effort

\$1,316,876.44

General Fund expenses for Special Education Students includes out of district placements, English Learner Students and Crisis Prevention Intervention.



Total Spending

\$1,564,570.05